

24 June 2011

PROJECT: Affordable Housing Development at 81-95 Boronia Rd. Greenacre, NSW
SUBJECT: Solar Access Compliance Report to be read in conjunction
with DD01 to 05 Rev 4 & DD12 Rev 1

Sydney

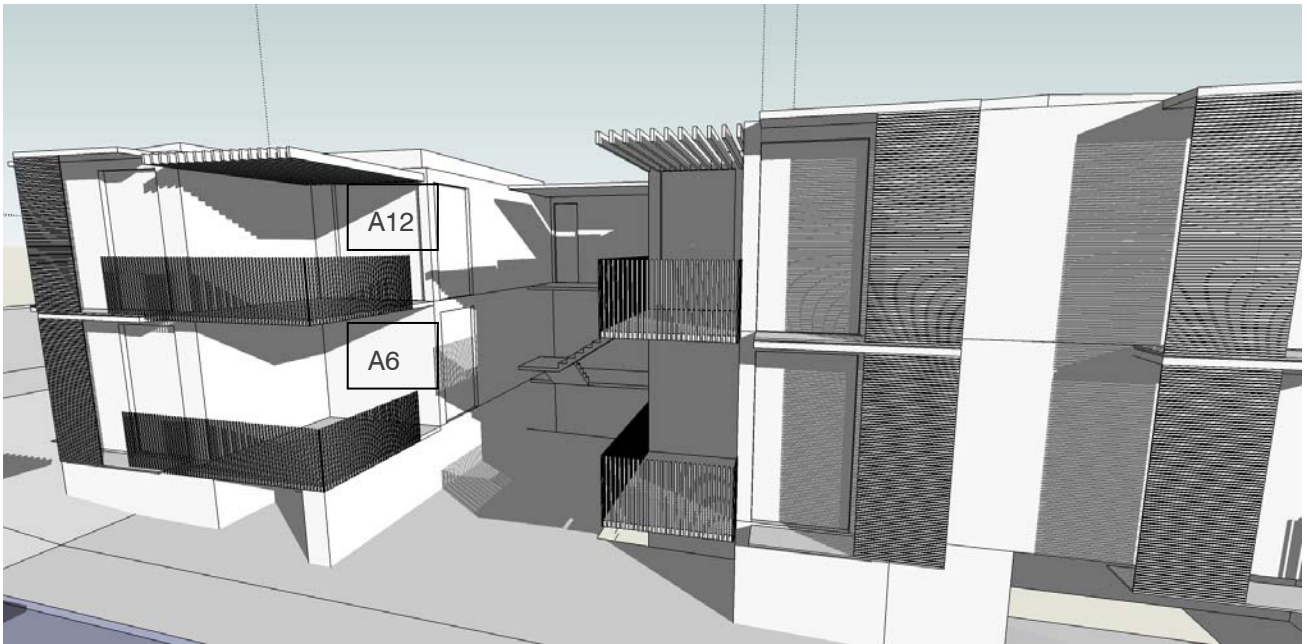
Studio 12, Level 5, 35 Buckingham Street
Surry Hills, NSW, 2010
Tel: +61 2 8396 9500 Fax: +61 2 8396 9555
E-mail: sydney@modedesign.com.au
ABN 65 112 807 931

QLD Peter Bartram 2333 NSW Rhonan O'Brien 7178 NT Robert McCray AR564

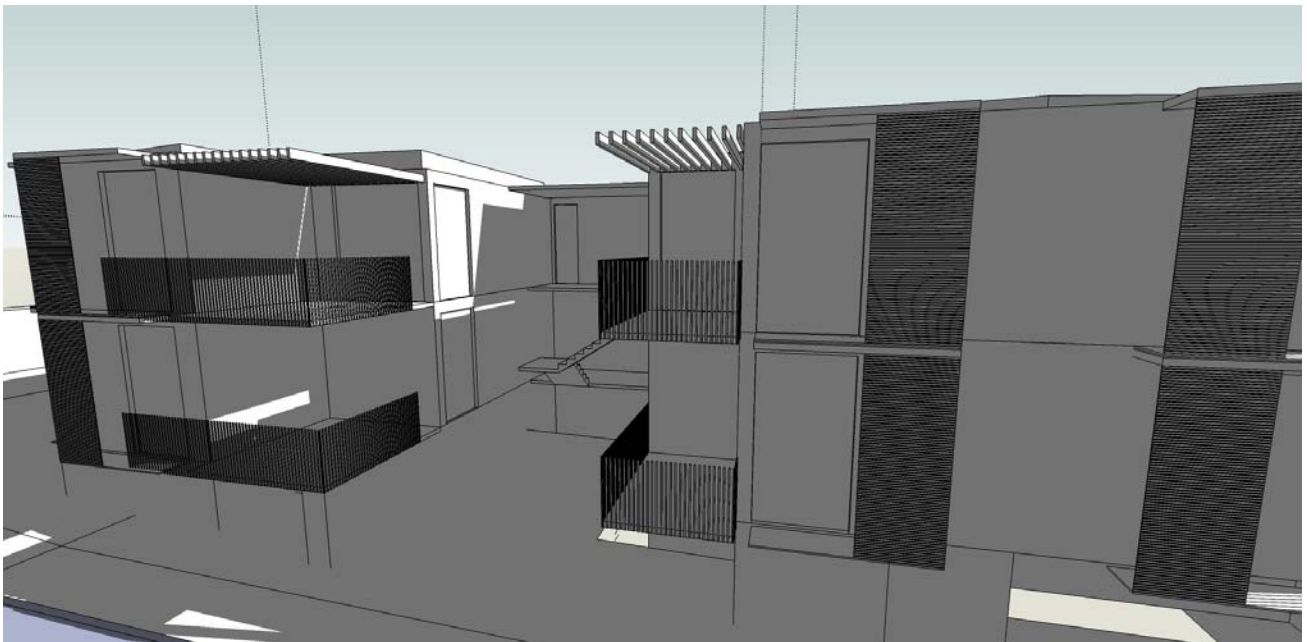
Brisbane Sunshine Coast Sydney Darwin Gold Coast

www.modedesign.com.au

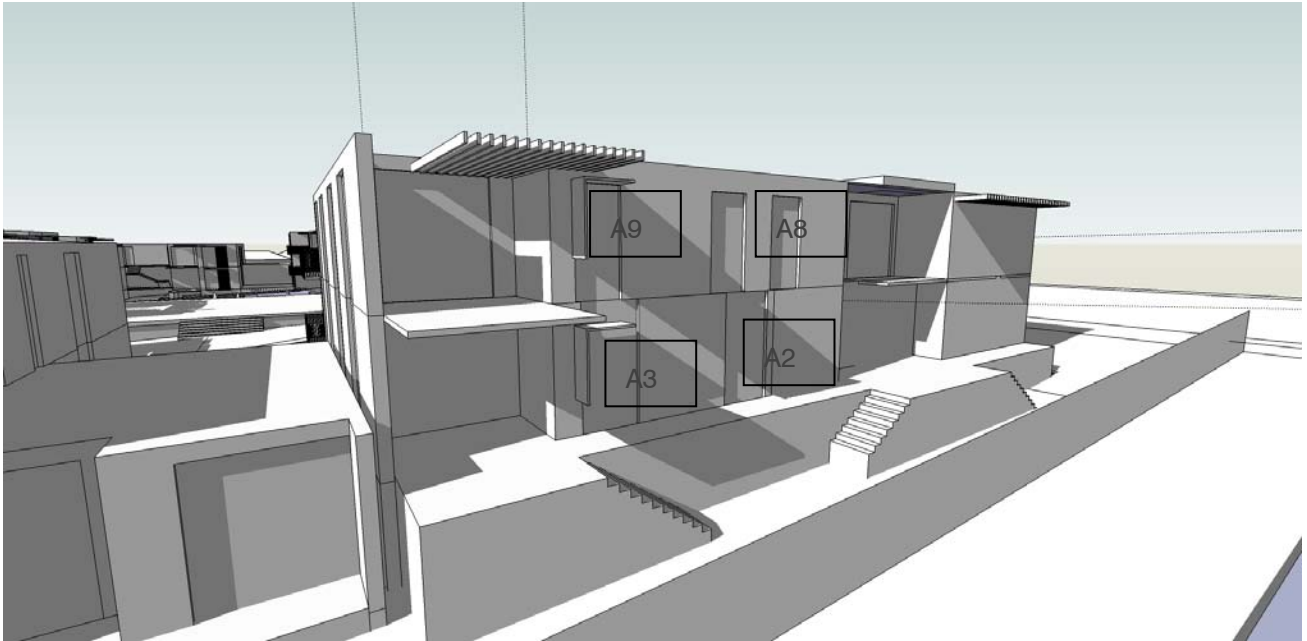
Building A, north east 9am. (units 4-6, 10-12)



Building A, north east 12pm. (units 4-6, 10-12)



Building A, north west 12pm. (units 1-3, 7-9)



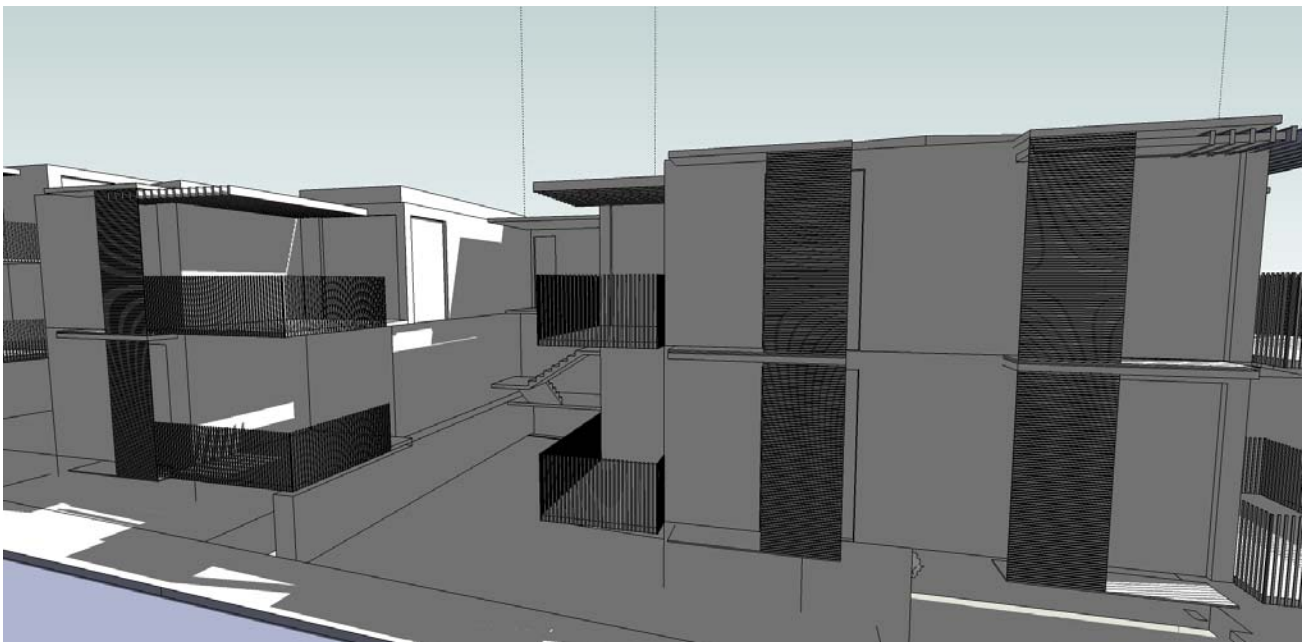
Building A, north west 3pm (units 1-3, 7-9)



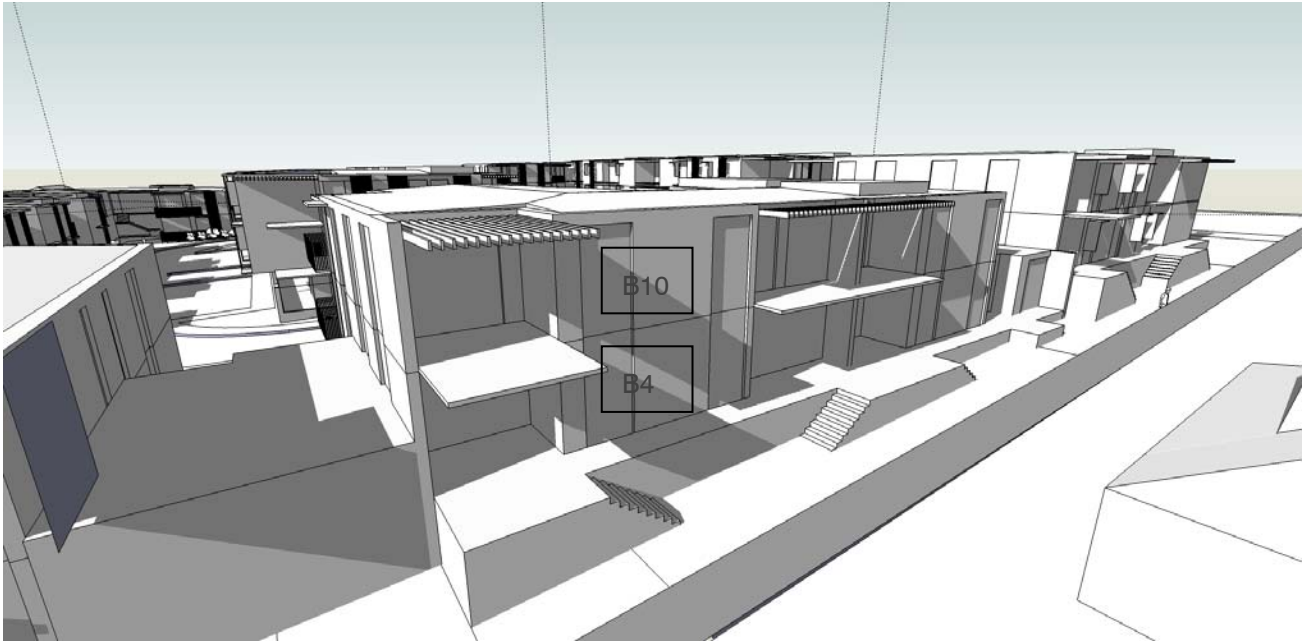
Building B, north east 9am. (units 1, 5-7, 11,12)



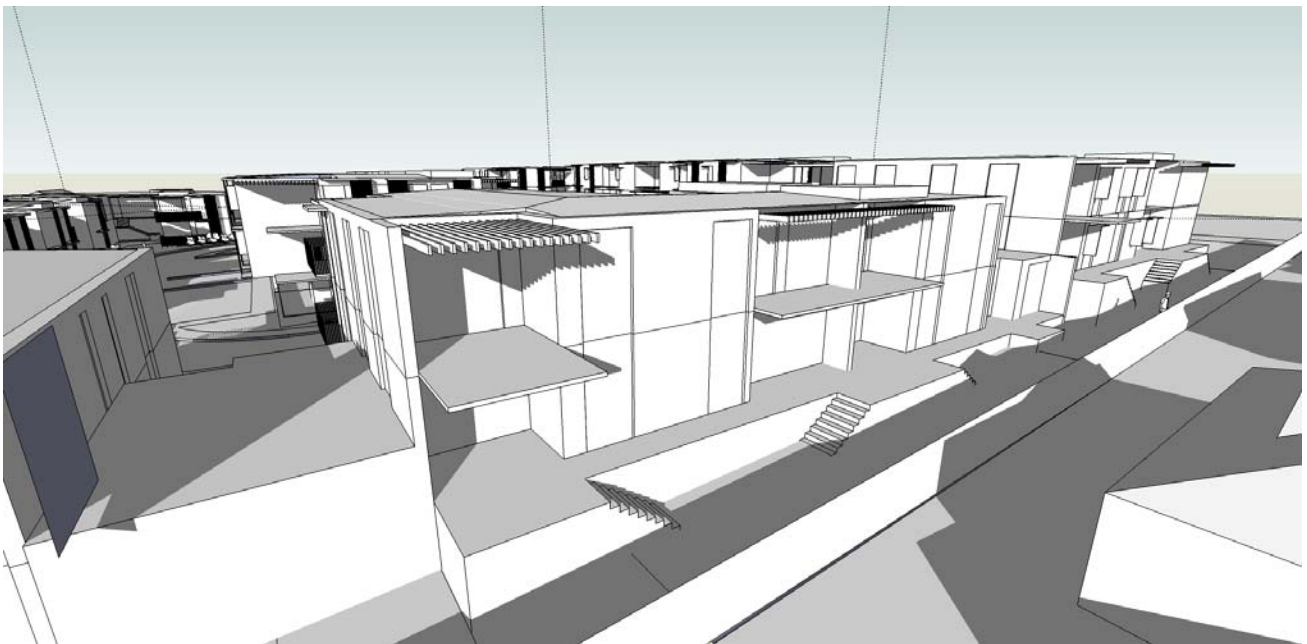
Building B, north east 12pm. (units 1, 5-7, 11,12)



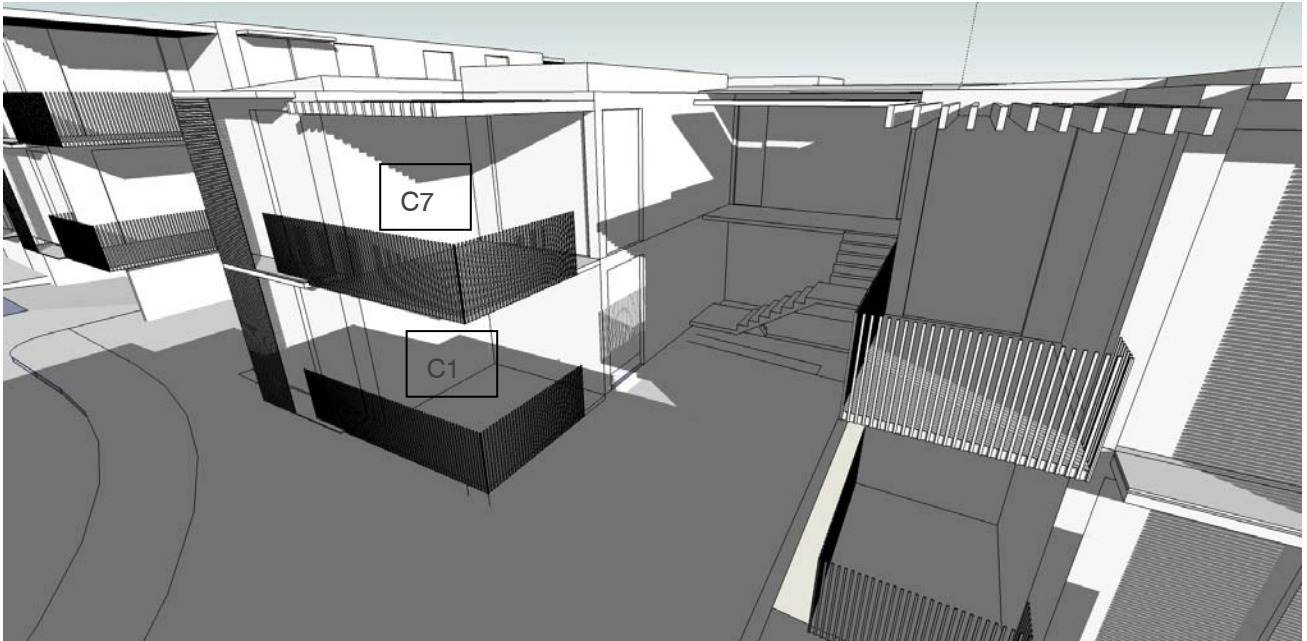
Building B, north west 12pm. (units 2-4, 8-10, 13)



Building B, north west 3pm. (units 2-4, 8-10, 13)



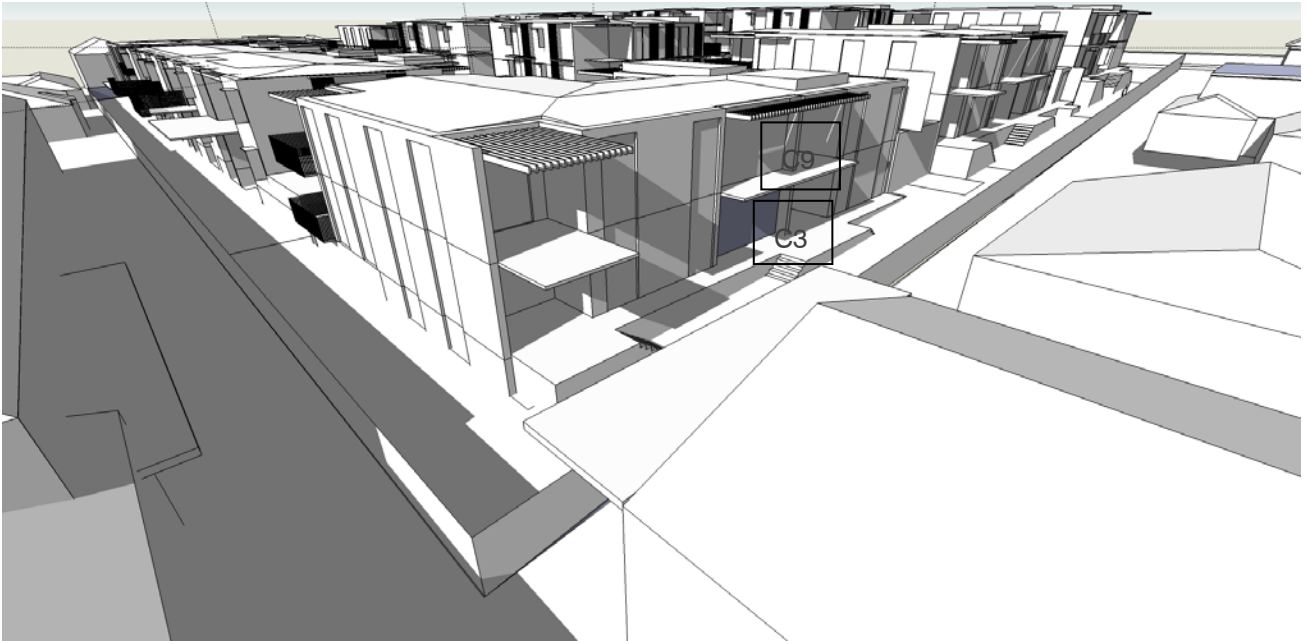
Building C, north east 9am. (units 1, 5-7, 11,12)



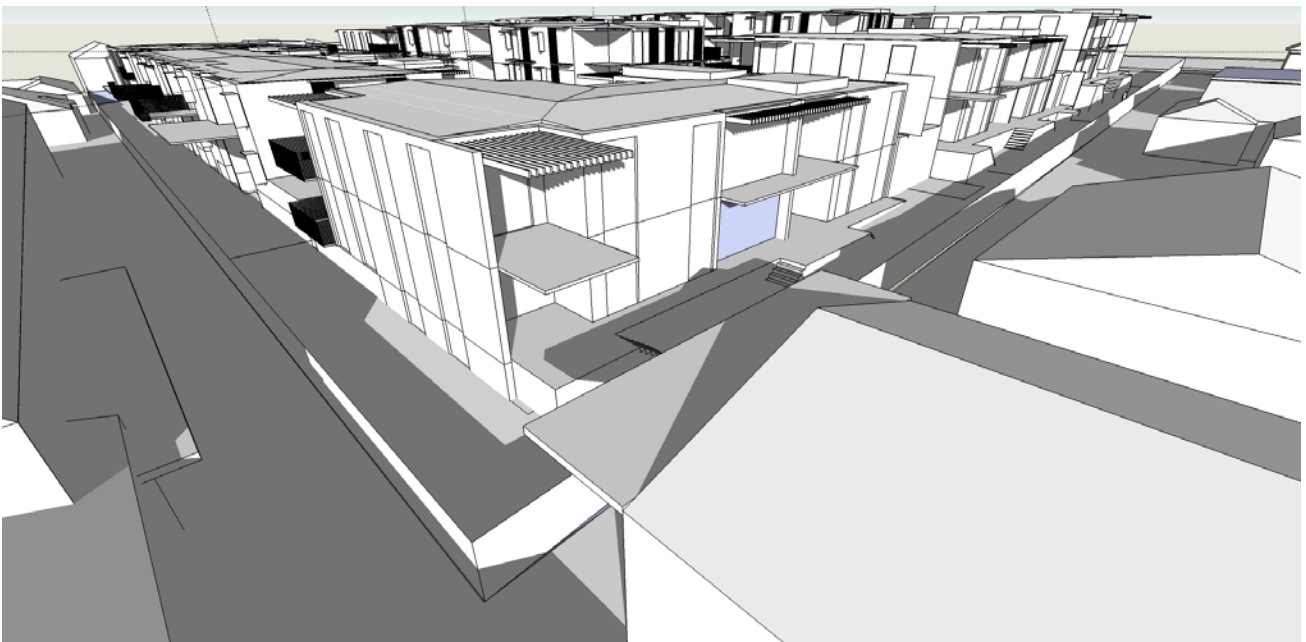
Building C, north east 12pm. (units 1, 5-7, 11,12)



Building C, north west 12pm. (units 2-4, 8-10, 13)



Building C, north west 3pm. (units 2-4, 8-10, 13)



Building D, north 10am. (units 2-4, 7-9). Building I, north 10am. (units 2-4, 7-9)



Building D, north 1pm. (units 2-4, 7-9). Building I, north 1pm. (units 2-4, 7-9)



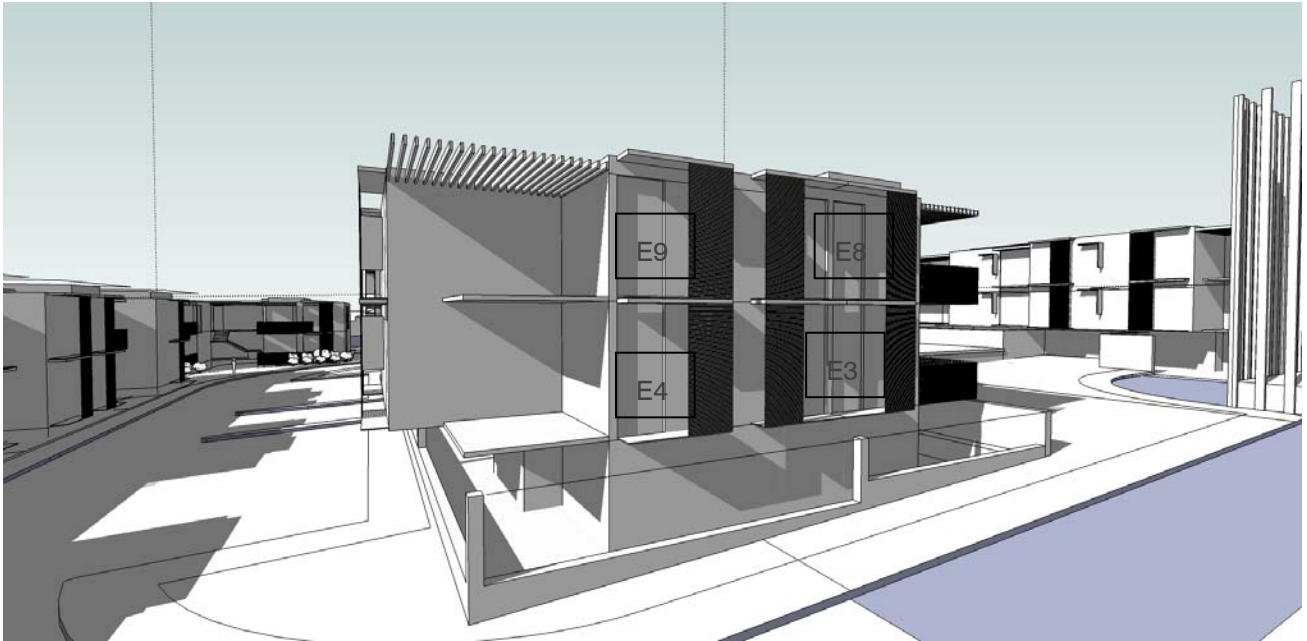
Building E, north 10am. (units 1-2, 4-6, 9-11). Building H, north 10am. (1-2, 4-6, 9-11)



Building E, north 1pm. (units 1-2, 4-6, 9-11). Building H, north 1pm. (1-2, 4-6, 9-11)



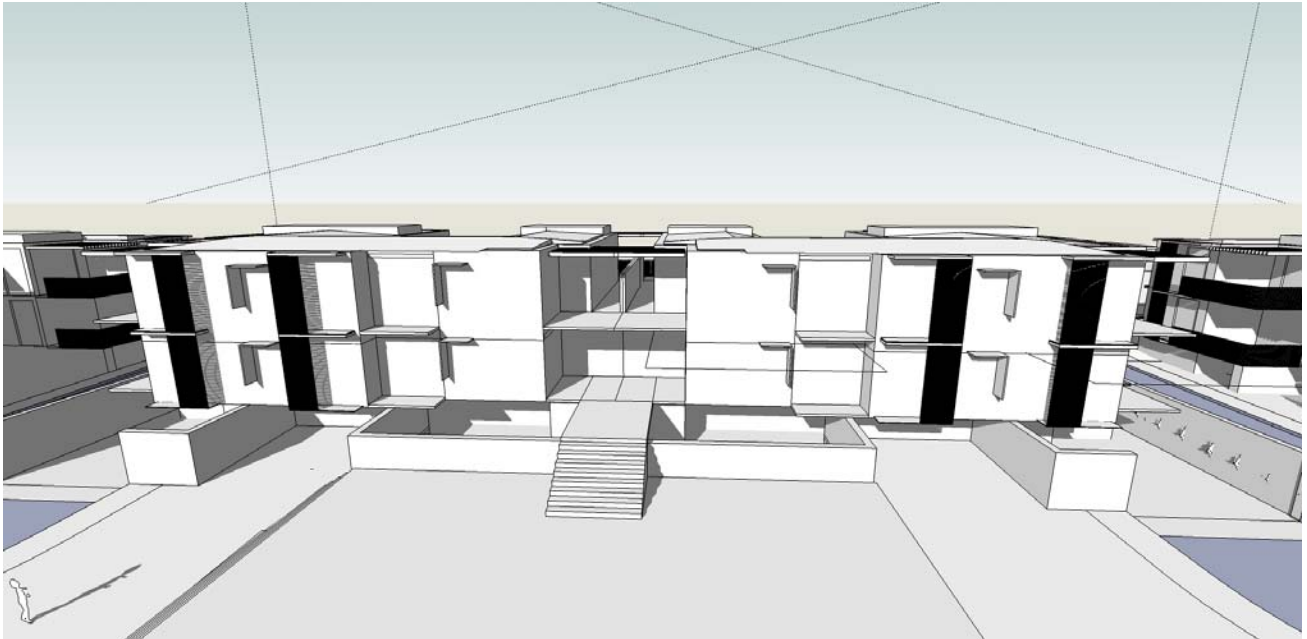
Building E, north west 12pm. (units 3-4, 8-9)



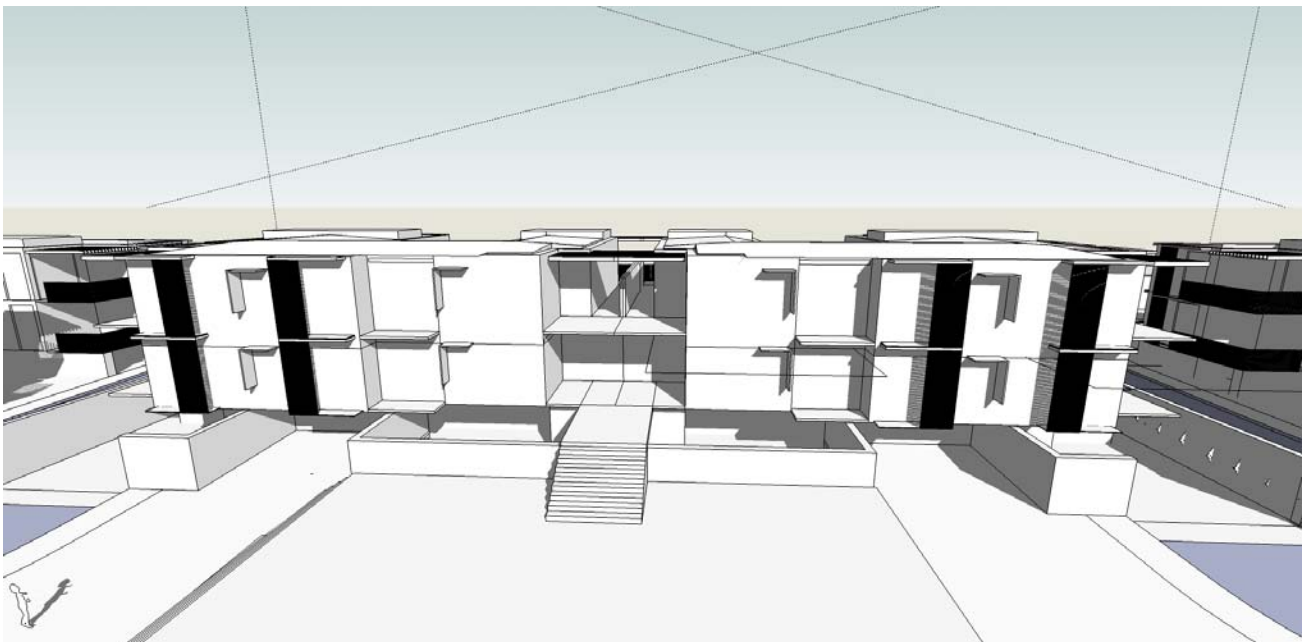
Building E, north west 3pm. (units 3-4, 8-9)



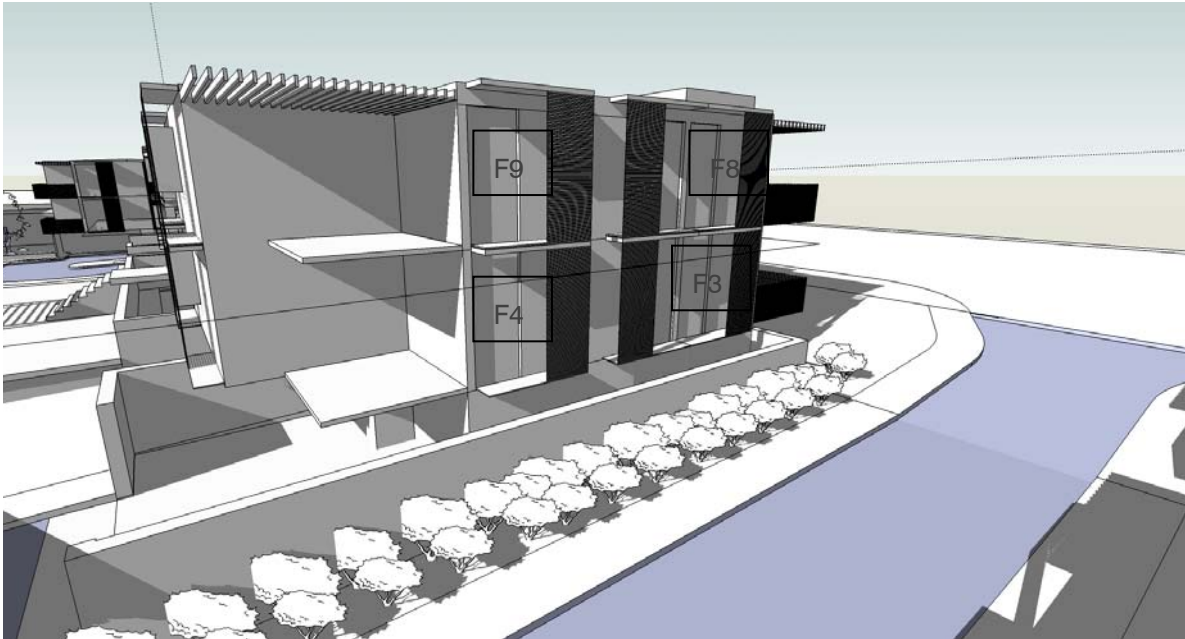
Building F, north 10am. (units 1-2, 4-6, 9-11). Building G, north 10am. (units 1-2, 4-6, 9-11)



Building F, north 1pm. (units 1-2, 4-6, 9-11). Building G, north 1pm. (units 1-2, 4-6, 9-11)



Building F, north west 12pm. (units 3-4, 8-9)



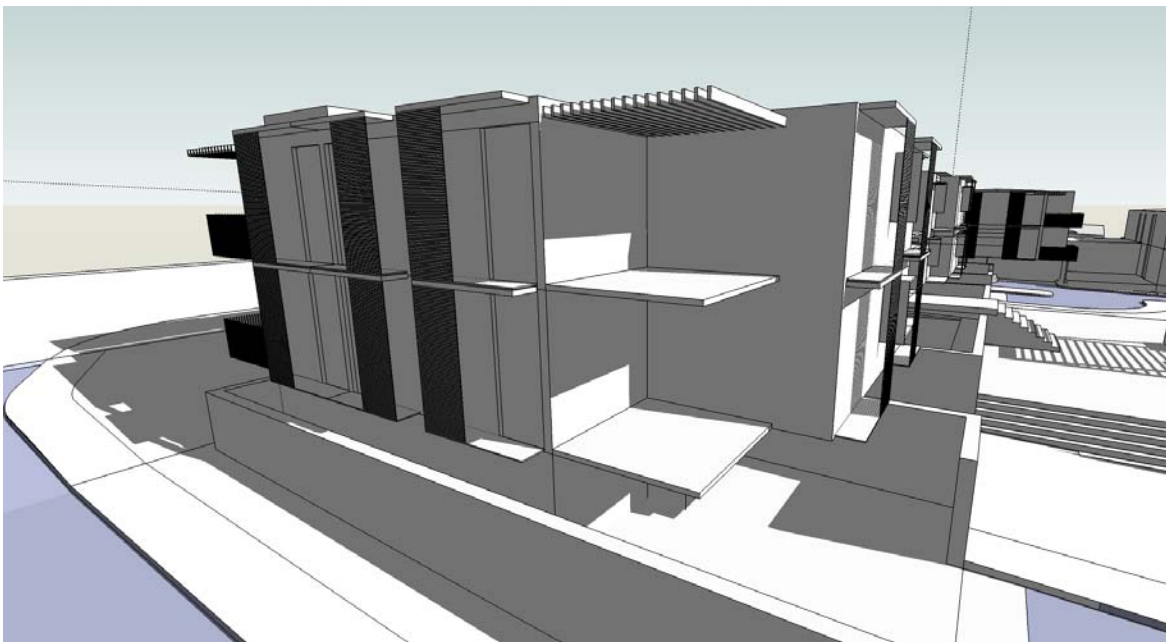
Building F, north west 3pm. (units 3-4, 8-9)



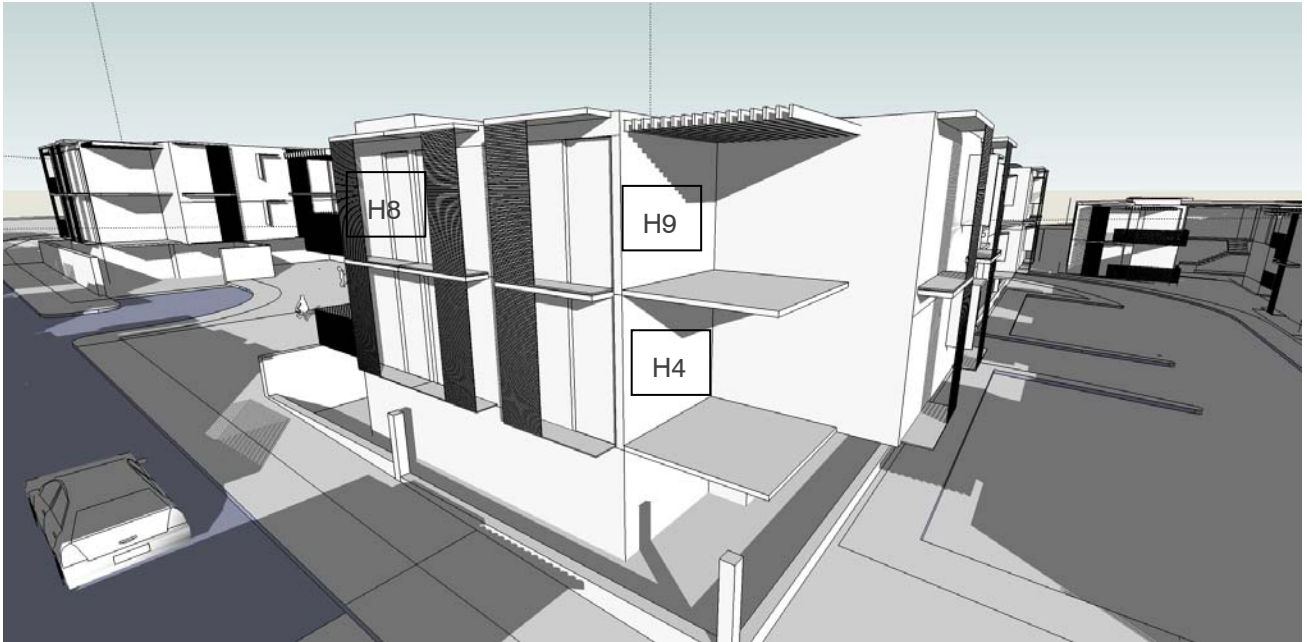
Building G, north east 9am. (units 3-4, 8-9)



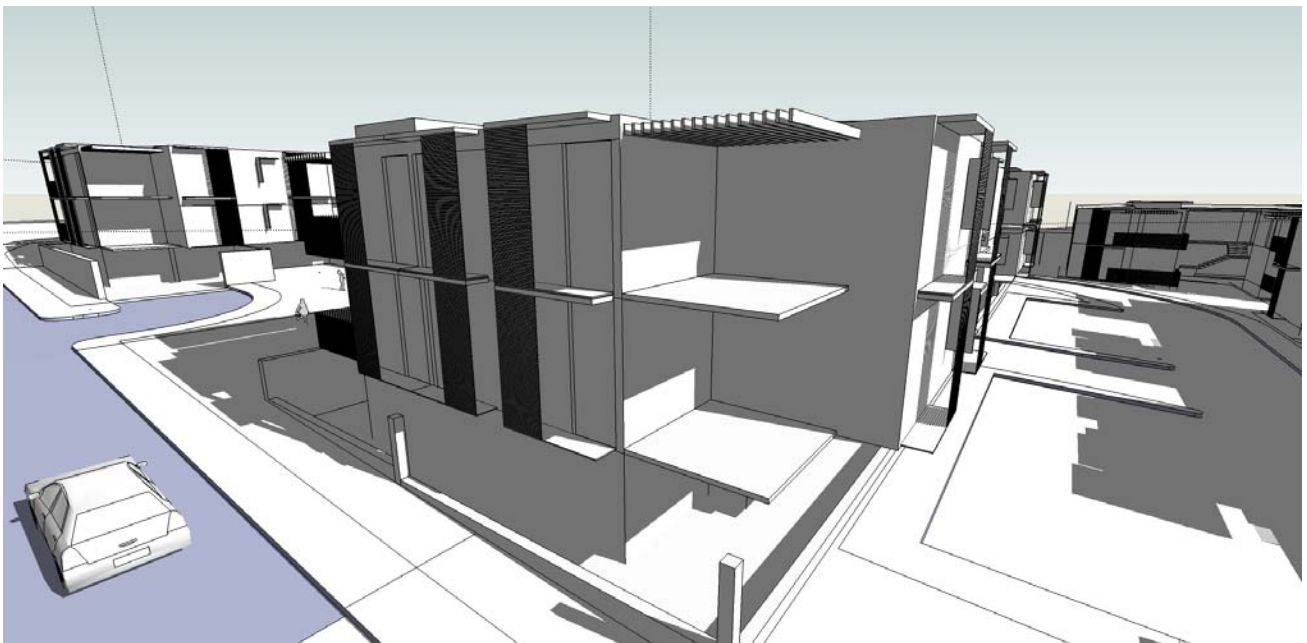
Building G, north east 12pm. (units 3-4, 8-9)



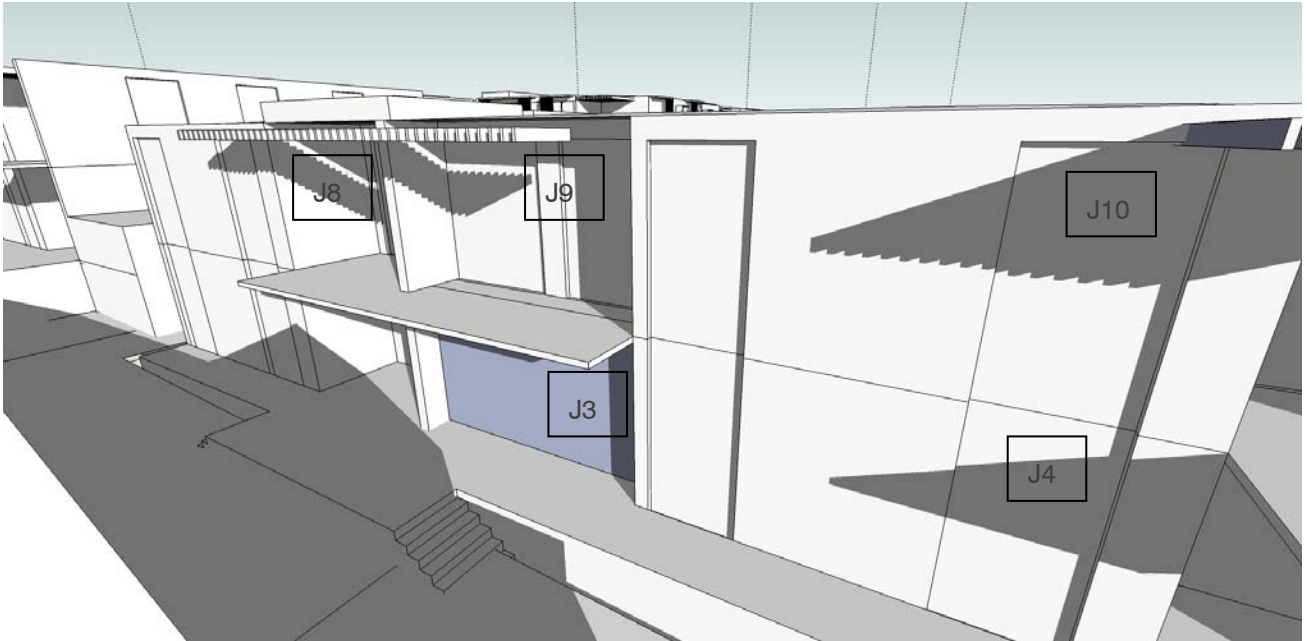
Building H, north east 9am. (units 3-4, 8-9)



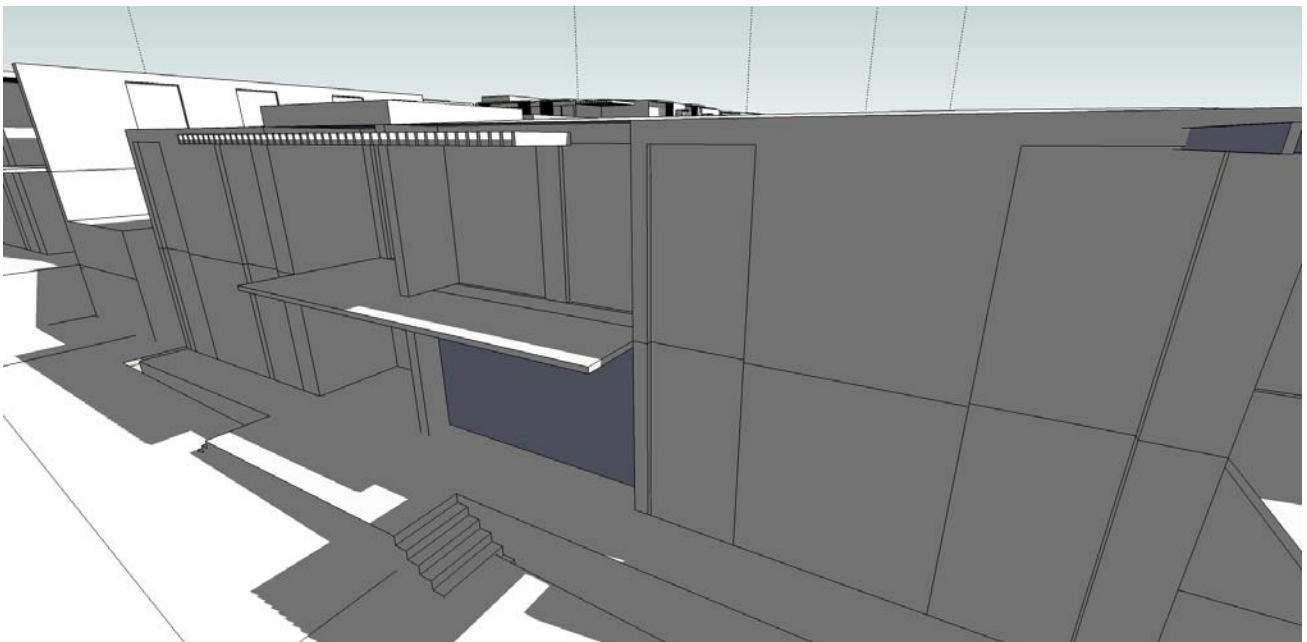
Building H, north east 12pm. (units 3-4, 8-9)



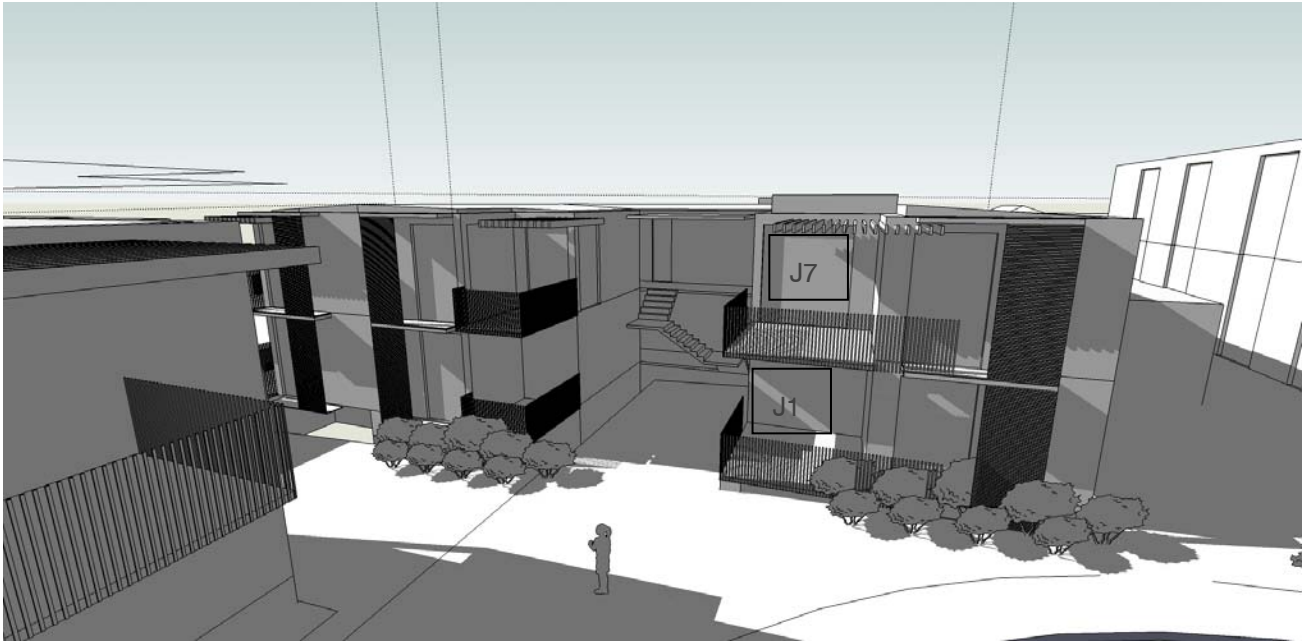
Building J, north east 9am. (units 2-4, 8-10, 13)



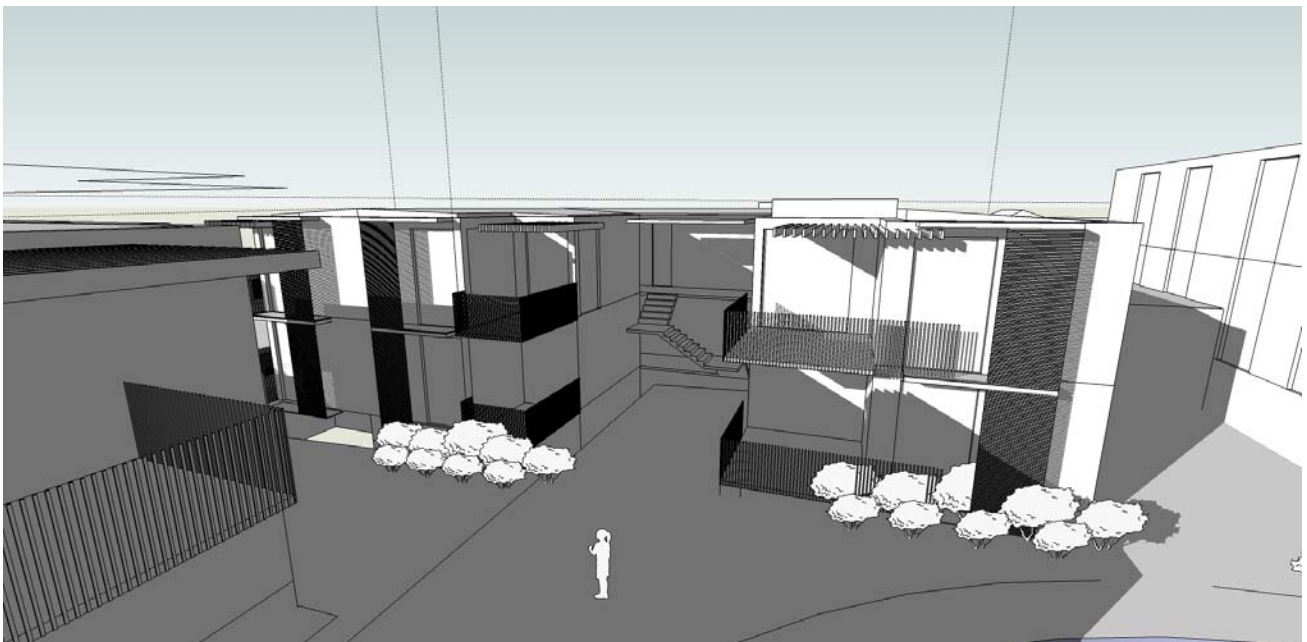
Building J, north east 12pm. (units 2-4, 8-10, 13)



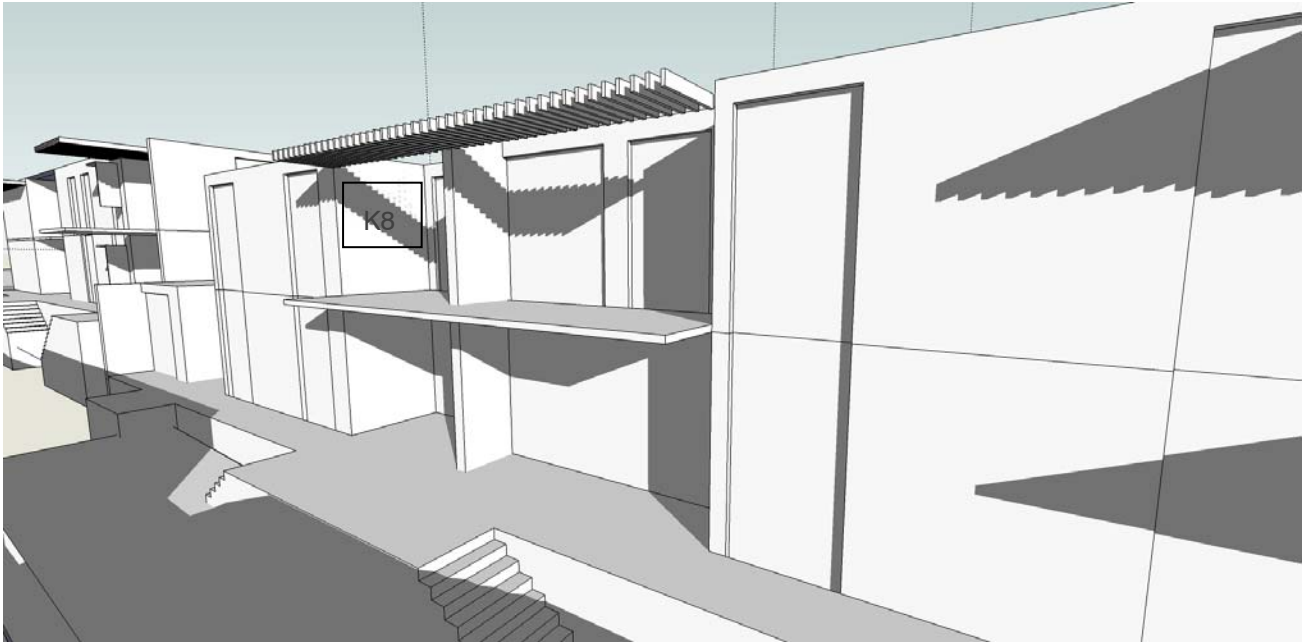
Building J, west 12pm. (units 1, 6-7, 12)



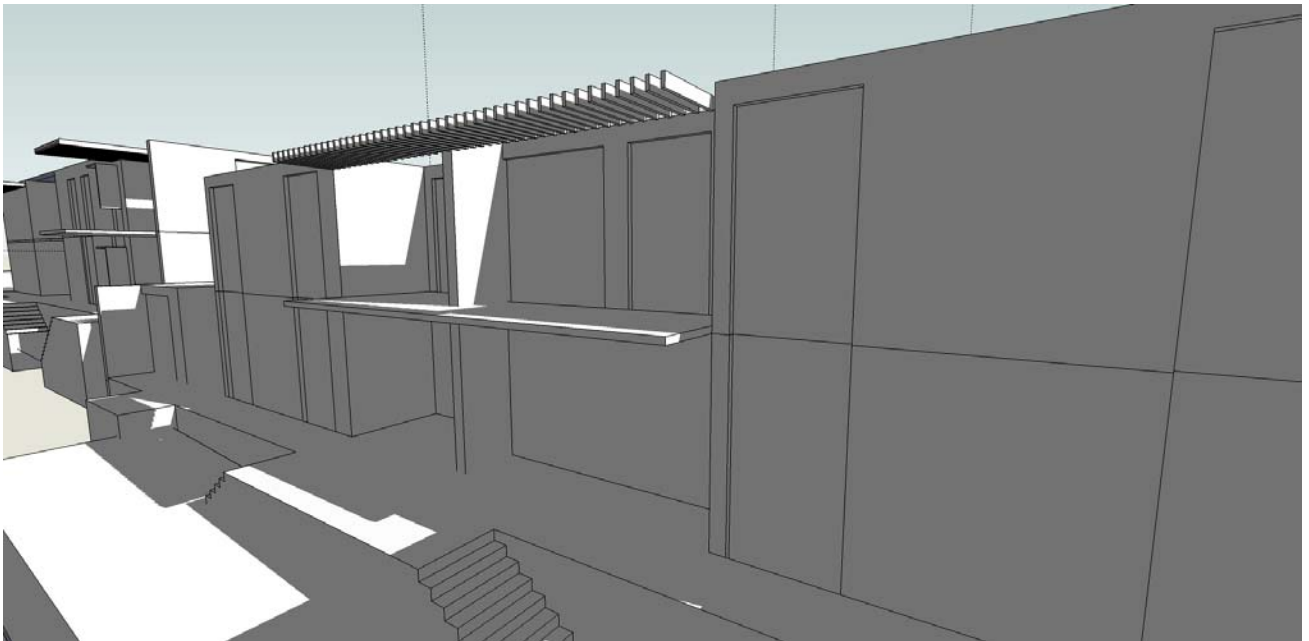
Building J, west 3pm. (units 1, 6-7, 12)



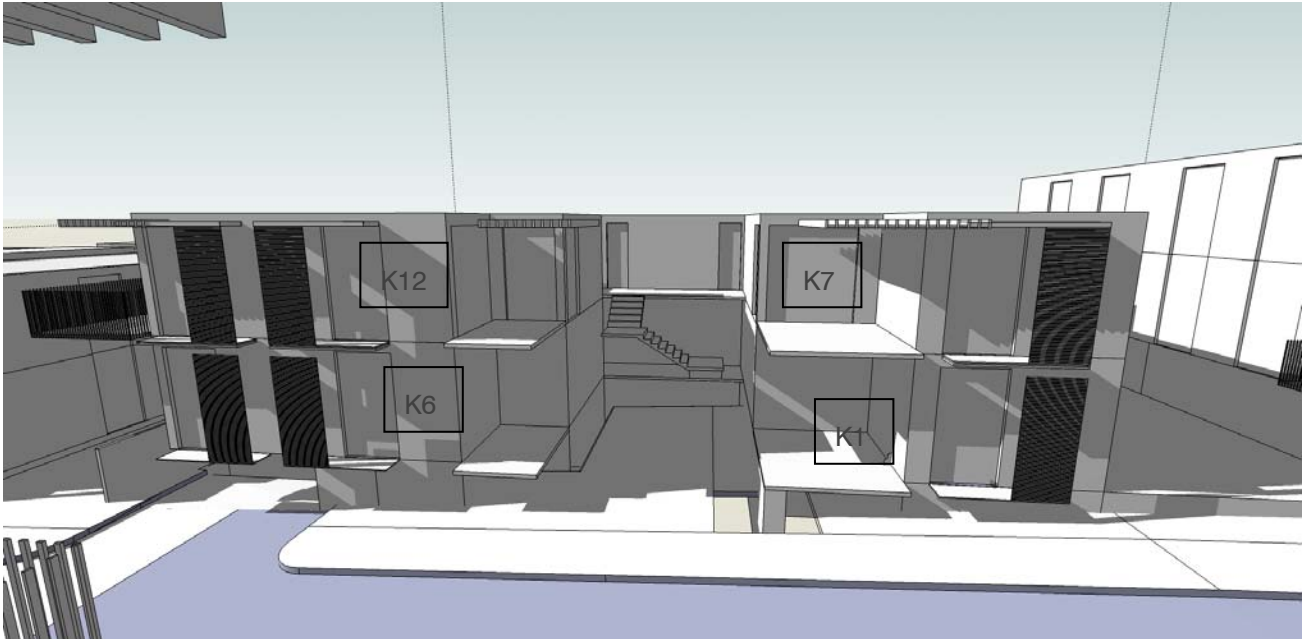
Building K, north east 9am. (units 2-4, 8-10, 13)



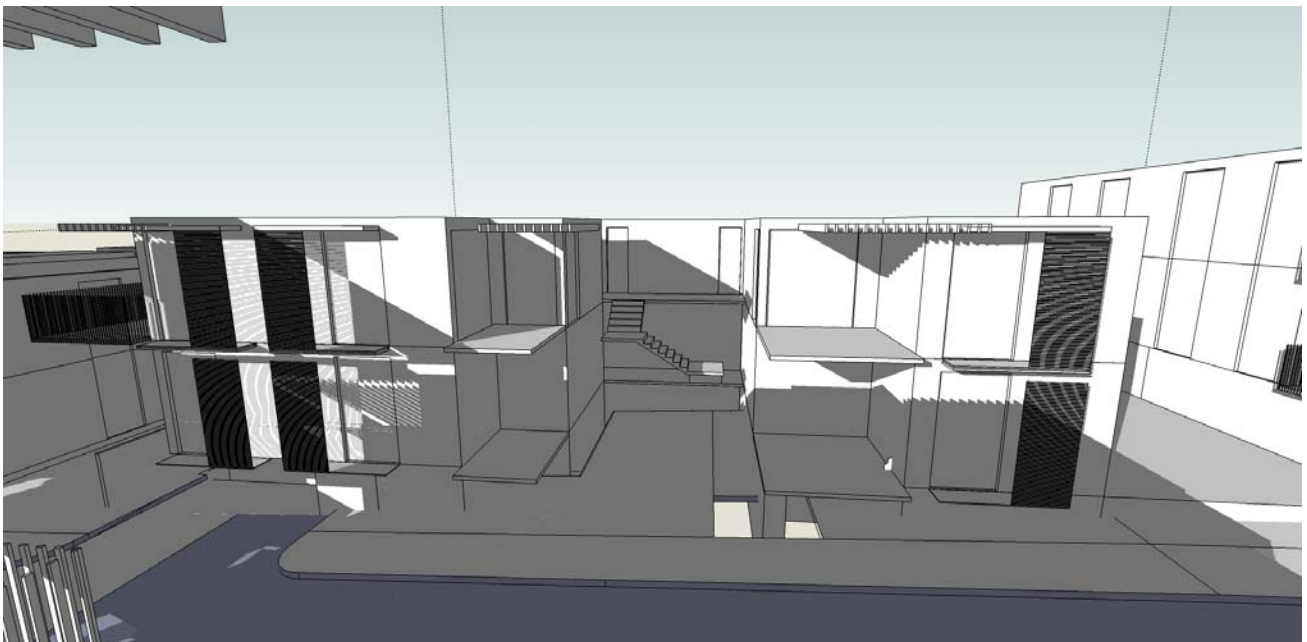
Building K, north east 12pm. (units 2-4, 8-10, 13)



Building K, west 12pm. (units 1, 5-7, 11-12)



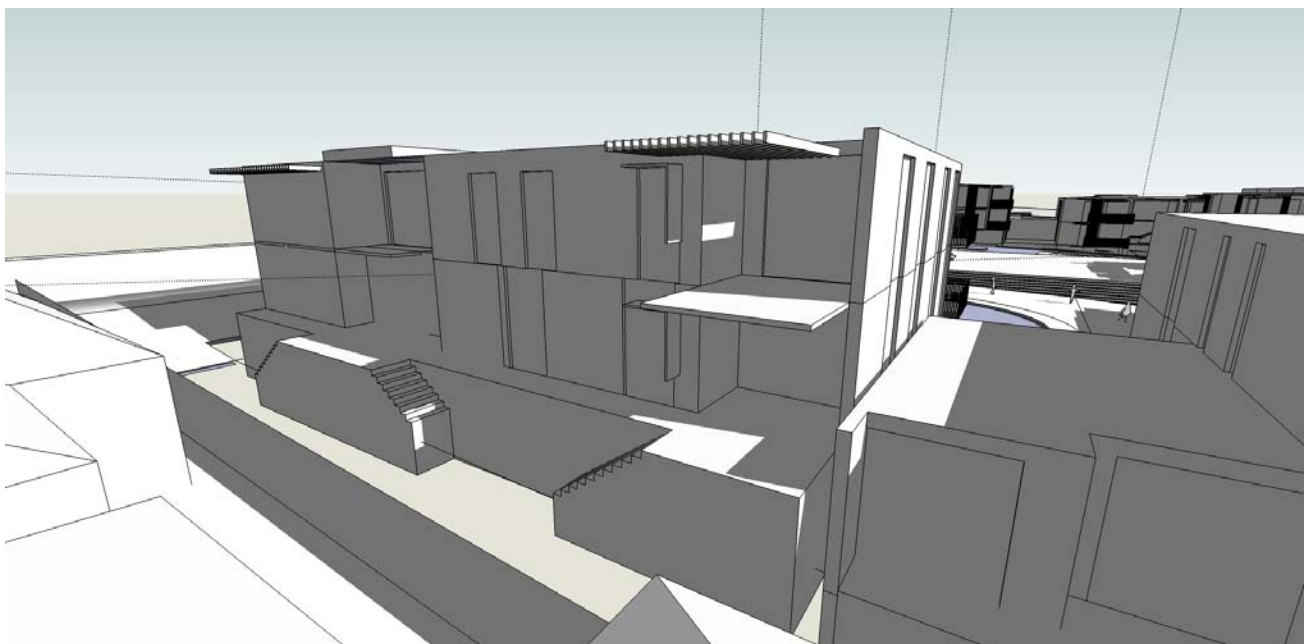
Building K, west 3pm. (units 1, 5-7, 11-12)



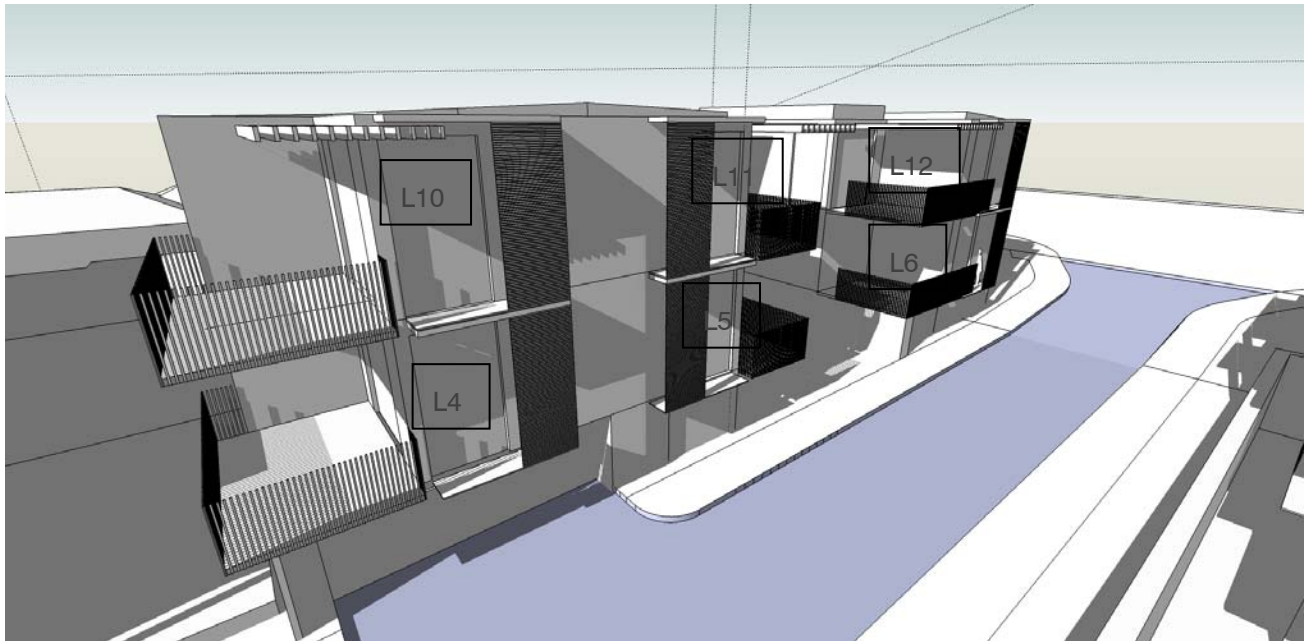
Building L, north east 9am. (units 1-3, 7-9)



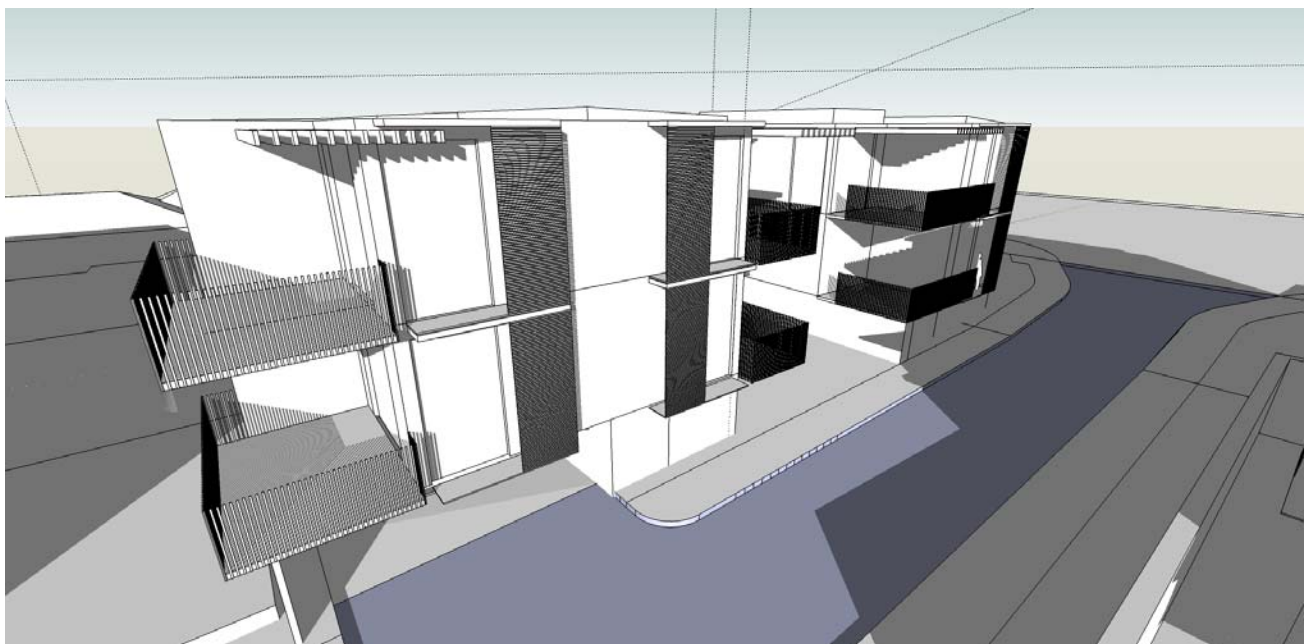
Building L, north east 12pm. (units 1-3, 7-9)



Building L, north west 12pm. (units 4-6, 10-12)



Building L, north west 3pm. (units 4-6, 10-12)



NOTE: The 3-dimensional model is developed for the requirement of solar study, but may have variation to ramps, stairs etc, which do not impact the accuracy of the solar study.